

Total Retail Square Footage
43,200.00 SF.

"Retail A" / "Phase I"
26,700.00 SF.

"Retail B" / "Phase II"
16,500.00 SF.

RTU SCHEDULE

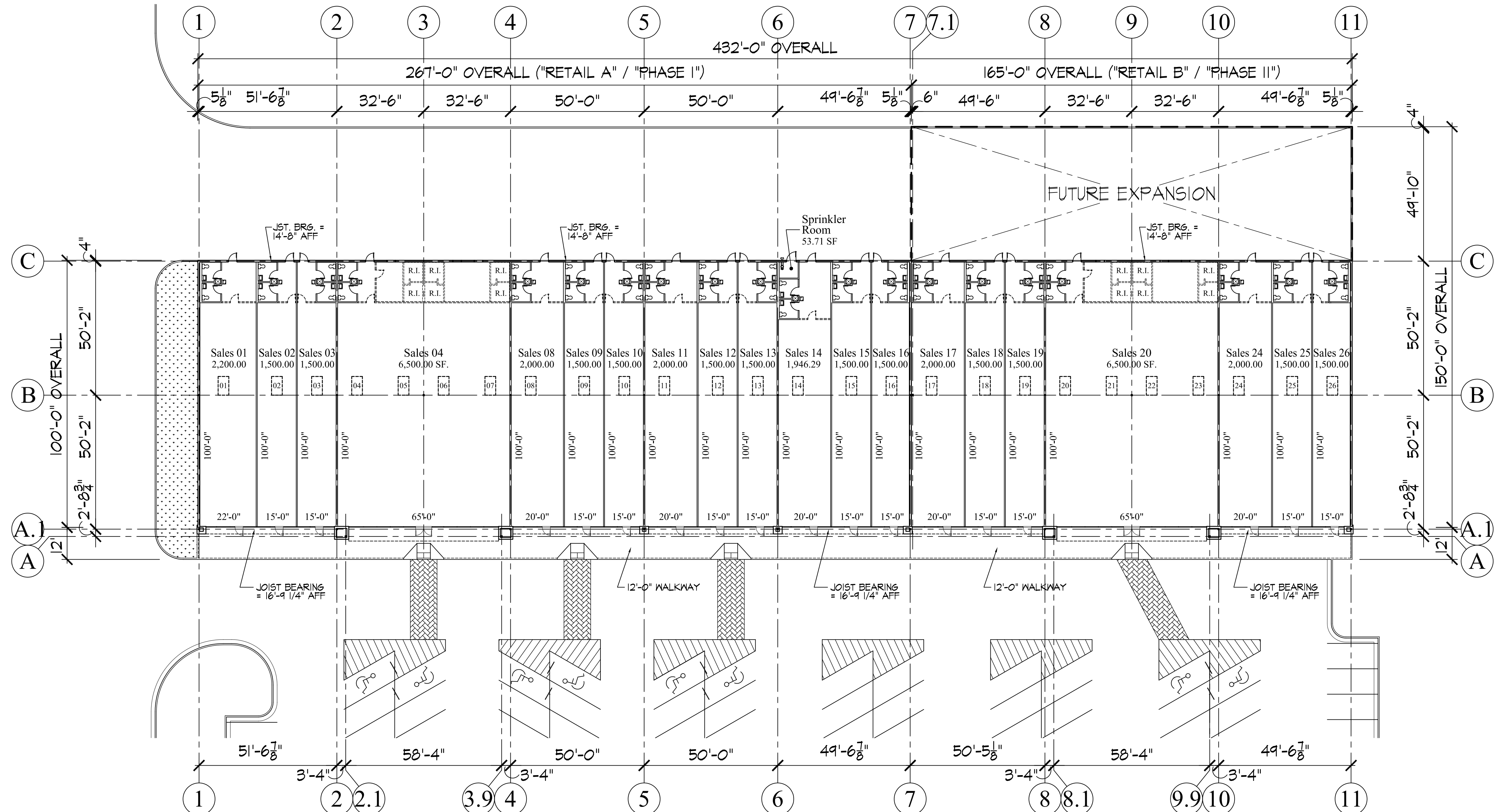
"Retail A" / "Phase I"

RTU #	C.D.	Prop.
RTU #01	N/A	7 Ton
RTU #02	N/A	5 Ton
RTU #03	N/A	5 Ton
RTU #04	N/A	5 Ton
RTU #05	N/A	5 Ton
RTU #06	N/A	5 Ton
RTU #07	N/A	5 Ton
RTU #08	N/A	6 Ton
RTU #09	N/A	5 Ton
RTU #10	N/A	5 Ton
RTU #11	N/A	6 Ton
RTU #12	N/A	5 Ton
RTU #13	N/A	5 Ton
RTU #14	N/A	6 Ton
RTU #15	N/A	5 Ton
RTU #16	N/A	5 Ton

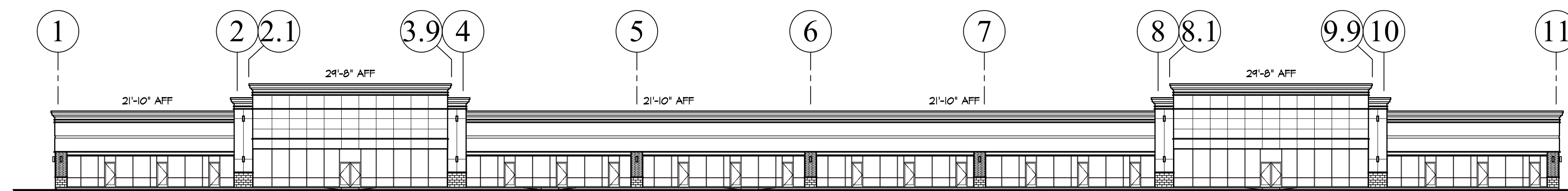
"Retail B" / "Phase II"

RTU #	C.D.	Prop.
RTU #17	N/A	6 Ton
RTU #18	N/A	5 Ton
RTU #19	N/A	5 Ton
RTU #20	N/A	5 Ton
RTU #21	N/A	5 Ton
RTU #22	N/A	5 Ton
RTU #23	N/A	5 Ton
RTU #24	N/A	6 Ton
RTU #25	N/A	5 Ton
RTU #26	N/A	5 Ton

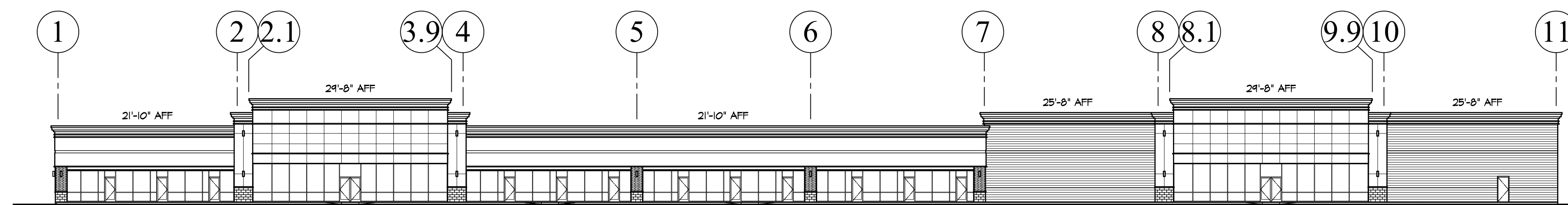
C.D. = Construction Documents
Prop. = Proposed RTU's



Conceptual Floor Plan No. 01



Conceptual Front Elevation No. 01a



Conceptual Front Elevation No. 01b

Date: Month, Day, Year

The Van Hooser Partnership

Architecture / Planning / Interior Design
321 Westport Plaza / Suite 208
Saint Louis, Missouri 63146

RETAIL CENTRE

New Retail Development for:

Intersecting Streets
City, State

REVISIONS:

PROJECT NO: 2436

DATE: Preliminary

SHEET:

C-1